

WARNING!
THE LOCATION OF EXISTING SERVICES SHOWN ON THESE PLANS MUST BE PROVEN ON SITE, THE APPROPRIATE AUTHORITY MUST BE CONTACTED AND THE SERVICES LOCATED PRIOR TO COMMENCEMENT OF ANY WORKS.



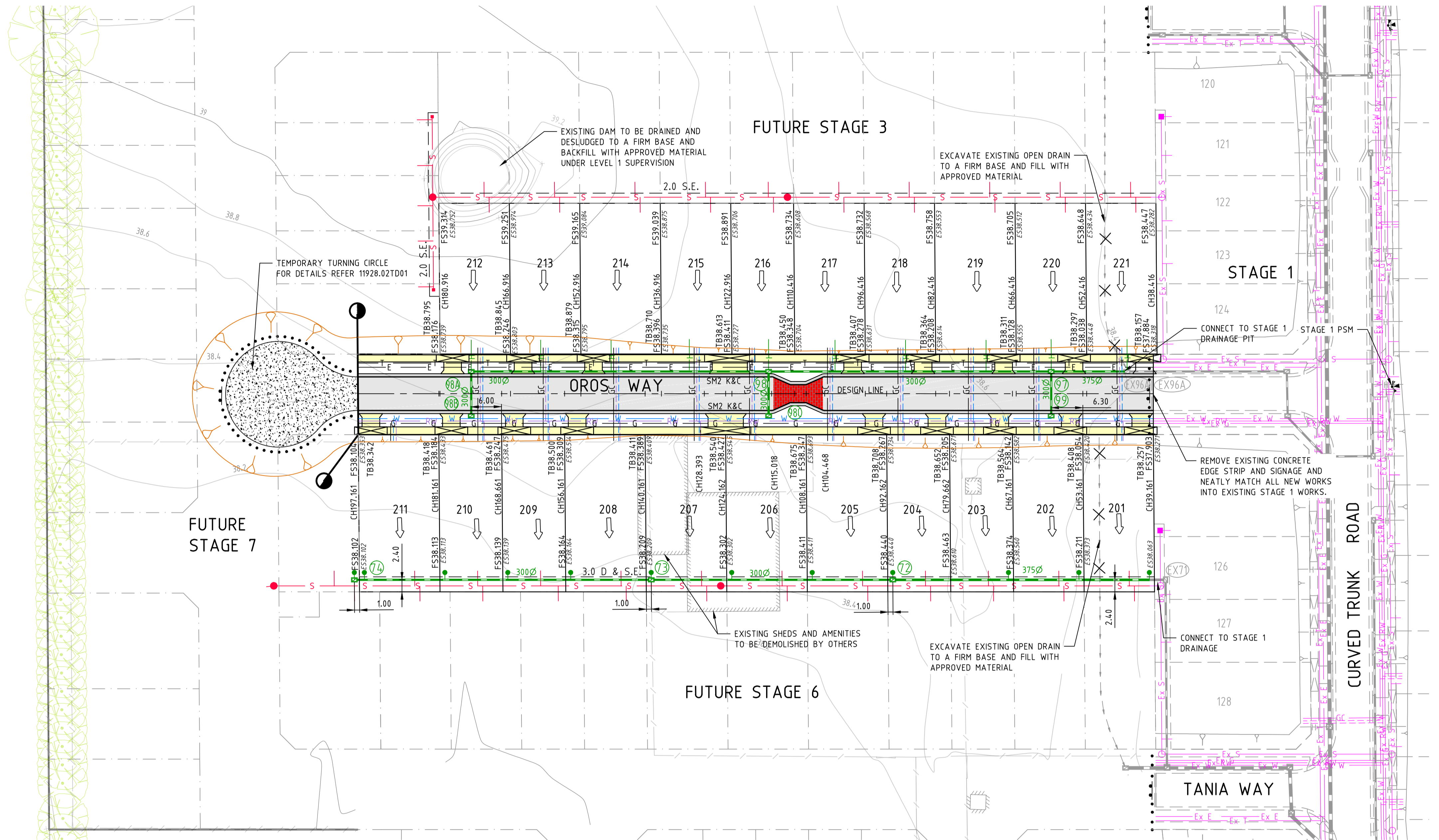
NOTE:
ALL EXISTING TREES, VEGETATION, ALL BUILDINGS AND FENCES AFFECTING THE DEVELOPMENT ARE TO BE REMOVED AND DISPOSED OF BY THE CIVIL CONTRACTOR. REFER 11928.03EF01 FOR DETAILS.

DANGER
OVERHEAD ELECTRICITY TRANSMISSION LINES. CONTRACTOR TO EXERCISE EXTREME CAUTION WHEN OPERATING IN THE VICINITY OF THESE LINES. THE CONTRACTOR MUST ADHERE TO ALL "NO GO ZONE" REQUIREMENTS OF THE POWER AUTHORITY.

WARNING
NO DRAINAGE WORKS SHALL COMMENCE UNTIL THE CONTRACTOR CONFIRMS THE I.L. OF ALL EXISTING DRAINS, AND CONFIRMS IN WRITING WITH THE ENGINEERING SUPERVISOR.

TABLE OF SERVICES LOCATIONS

STREET NAME	WATER	ND-WATER	GAS	NBN Co.	ELEC.	POLES	BOK
OROS WAY	3.20 S	2.70 S	2.25 S	1.775 N	2.60 N	2.90 N	4.20 S 3.90 N



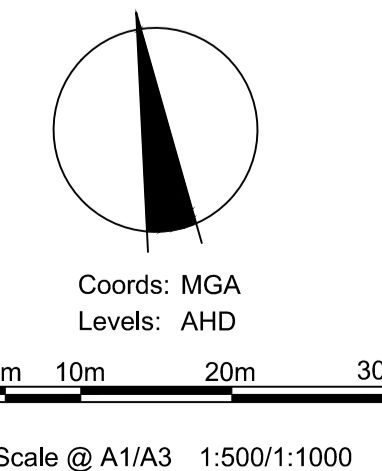
Drawing File: G:\Desig\1900\11928.02-138_Rix_Road_Beaconsfield_Stage 2\Acad\REV\11928.02DP01.dwg - 11928.02DP01
Date/Time: Fri Aug 28, 2015 - 2:50pm - jacob.burns-

REV	DESCRIPTION	DATE	APP'D.
0	CONSTRUCTION ISSUE	28/08/15	TL
	AMENDMENTS		

Drawn HT Date 12/09/14
Designed PM
Date 08/09/14
AN 1421002
Verified TT
Date 09/11/14
AN 942007
Audited SL
Date 26/08/15
AN 1061884
Approved TL
Date 28/08/15
AN 884348
Written dimensions to take precedence over scale.
Contractor shall check and verify all dimensions on site.
Discrepancies to be brought to the attention of the Superintendent.

LEGEND

- Ex W — EXISTING WATER MAIN
- Ex G — EXISTING GAS MAIN
- Ex E — EXISTING ELECTRICAL CABLE
- Ex S — EXISTING SEWER MAIN & MANHOLE
- Ex T — EXISTING TELECOMM. CABLE AND PIT
- Ex P — EXISTING ELEC. POLE & O'HEAD LINES
- Ex V — EXISTING STORMWATER DRAIN & PIT
- Ex C — CONSTRUCTED PRE DEVELOPMENT
- Ex T — EXISTING TREES TO BE REMOVED
- 155.0 — FINISHED SURFACE CONTOUR
- ← REGRADE LOT AT MIN 1 IN 150
- S — SEWER MAIN AND MANHOLE
- M — MELBOURNE WATER DRAIN
- SD — STORMWATER DRAIN & PIT
- PI — PROPERTY INLETS
- HD — HOUSE DRAIN
- GC — GAS CONDUIT
- WC — WATER CONDUIT
- RCW — RECYCLED WATER CONDUIT
- TC — TELECOMM. CONDUIT
- E520.06 — EXISTING SURFACE LEVEL
- F521.650 — FINISHED SURFACE LEVEL
- OED — OPEN EARTH DRAIN (O.E.D.)
- OF — OPTIC FIBRE
- W — WATER
- RW — RECYCLED WATER
- T — TELECOMMUNICATIONS
- E — ELECTRICITY
- G — GAS
- ASP — ASPHALT PAVEMENT
- CON — CONC FOOTPATH / DRIVEWAY
- TH — THRESHOLD TREATMENT
- L — LIMIT OF WORKS



BANRIAR INVESTMENTS PTY LTD
BEAONSFIELD LAVENDER ESTATE - STAGE 2
138 RIX ROAD, BEAONSFIELD
DETAIL PLAN

Drawing No. 11928.02DP01 Rev 0
Sheet No. 03 CONSTRUCTION
© Dalton Consulting Engineers Pty Ltd
ABN 78 429 221 049

DCE
dalton consulting engineers

255 Whitehorse Road
PO Box 349
Balwyn Victoria 3103
Australia
T 61 3 8888 8888
F 61 3 8888 8880
W www.dceprofile.com

Suite 17
46 Douglas Street
PO Box 1178
Milton QLD 4064
Australia
T 61 7 3367 1732
E info@dceprofile.com